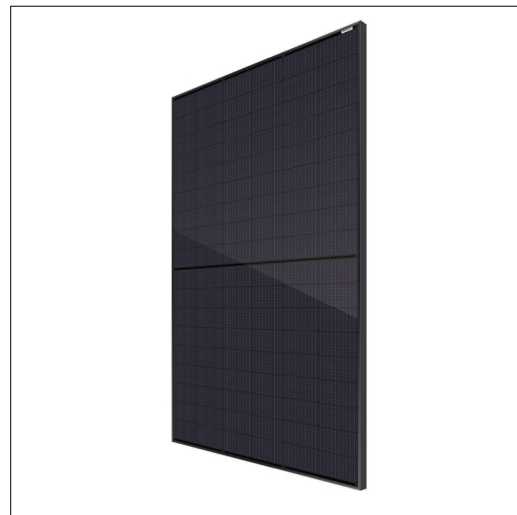


ELIT NOARK ExSM-M-400

Technical description

Advantages:



Product name/ Art.nr/ GTIN	ELIT NOARK ExSM-M-400/ 22350000/ 7070810021765
According to:	---
Cell material	Mono crystalline
Number of cells	108
MPP power by STC	400 Watt peak (Wh/d)
Max. system voltage	1500 Volt
Open circuit voltage	36,96 Volt
Short-circuit current	13,6 Ampere
Module efficiency factor (STC)	20,48 Percentage
Temperature coefficient Pmpp	-0,34 Temperature coefficient
Temperature coefficient Uoc	-0,27 Temperature coefficient
Temperature coefficient Isc	0,048 Temperature coefficient
Length	1722 Millimetre
Width	1134 Millimetre
Height	35 Millimetre
Weight	22 Kilogram
Colour frame	Black
Colour cells	Black
Colour backsheet	Black
Cable length	1200 Millimetre
Operating temperature	-40 - 85 Degrees celsius